



## Fail-Safe® MilBerm™ Bund

Heavy-duty construction provides long-term spill containment for vehicles, heavy equipment, tankers, generators, and more.

- Single-piece construction—patented wall-support system integral to boom provides unobstructed work space
- Provides faster deployment—stronger structural integrity
- Quick and easy setup—no assembly required
- Heavy-duty 8130 XR-5® or equivalent fabric stands up to corrosive solvents and extended wear
- Fail-Safe® flotation device on entry/exit walls automatically deploys walls to the raised position if there is a spill, even if covered by sand or snow—allows leaving the entry/exit in the down position for drive-in and drive-out
- When in the upright and locked position, wall supports that are spaced on a maximum of 2 ft centers prevent snow and ice from interfering during a spill occurrence
- When staked down, the walls are capable of withstanding 3.9 lb of force in all directions without failure

Fail-Safe® flotation device incorporated on entry/exit walls.



Clean lines of the bund with no obstruction either on the bund interior or exterior.



Reinforced, wraparound design prevents seam leaks for fluid-tight reliability.

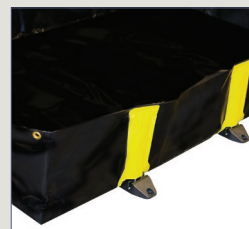
No assembly needed—  
saves time, ready  
in minutes!



Unfold bund, exposing supports in flat position.



A simple tug locks supports in upright position.



Fully deployed for quick spill readiness!



**Diverse Environmental  
Solutions**

The Fail-Safe® MilBerm™ Bund offers superior protection and chemical resistance against the harshest of liquids, including petroleum, oils, greases, and most acids.

Unlike floating-wall-type bunds that are susceptible to wall collapse and containment failure, the patented wall support design features a stainless steel brace that supports the wall at a full 90° locked position for secure, leakproof containment. A simple push on the walls unlocks the support and lays the wall down for drive-through capability from any angle. The end walls also feature the patented Fail-Safe® flotation device that allows the user to leave the entry/exit walls in the down position, weather permitting. This feature enables the walls to auto-deploy to the upright position using the dynamics of fluid pressure to push the wall up without allowing a spill event. The end walls also include the wall support with locking detent to keep the end walls upright should snow or ice be forecasted. End walls can fully contain a spill when covered with 6 lbf/ft<sup>2</sup> of sand or snow.



Folded Fail-Safe® MilBerm™ Bund securely attached to the HEMTT tanker for deployment at a moment's notice.

The ingenious Fail-Safe® MilBerm™ Bund built-in wall support design deploys instantly while minimizing drive-over damage and tripping hazards.





The built-in patented wall supports maximize usable space inside the bund and greatly reduce any tripping hazard on the berm perimeter. Reinforced corner design with wraparound diagonal radio frequency welds offers exceptionally strong structural integrity to prevent seam leaks, provide fluid-tight reliability, and extend bund life expectancy. Finished hem edge on top of sidewall prevents fraying and adds strength. Each support includes a built-in staking point for anchoring the bund under high wind conditions. (Anchor stakes are not included).

Helps comply with EPA for containment and spill prevention (SPCC).



Fail-Safe® flotation device on both the entry and exit walls is self-erecting and will rise as the fluid level rises. The entry/exit walls also have the brace support, which will lock into position with the rising fluid level.

**Patented support mechanism**

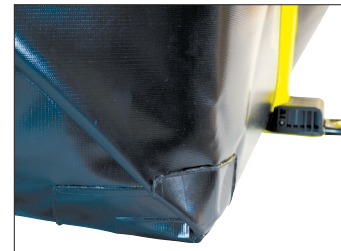


Sets up to a 90° locked position. Integrated holes in hub permit easy anchoring.



Stainless steel support is encased in protective hub to withstand vehicle traffic.

**Corner construction**



Reinforced, wraparound design prevents seam leaks for fluid-tight reliability.

Dimensions W x L x H	Capacity	Weight	Folded Size	Part No	CA Prop 65	Application
4 ft x 6 ft x 1 ft 1.2 m x 1.8 m x 0.3 m	179 gal 678 L	28 lbs 13 kg	30 in x 30 in x 6 in 762 mm x 762 mm x 152 mm	1055-02003-105	⚠	Small generators/ POL storage
10 ft x 10 ft x 1 ft 3.0 m x 3.0 m x 0.3 m	748 gal 2832 L	69 lbs 42 kg	30 in x 30 in x 12 in 762 mm x 762 mm x 305 mm	1055-01859-105	⚠	15-60K generators/ POL storage
10 ft x 16 ft x 1 ft 3.0 m x 4.9 m x 0.3 m	1196 gal 4527 L	81 lbs 37 kg	30 in x 30 in x 14 in 762 mm x 762 mm x 356 mm	1055-02026-105	⚠	100K generators/ POL storage
12 ft x 26 ft x 1 ft 3.7 m x 7.9 m x 0.3 m	2333 gal 8831 L	147 lbs 67 kg	36 in x 36 in x 12 in 914 mm x 914 mm x 305 mm	1055-01847-105	⚠	5- or 7-ton truck with fuel pods
12 ft x 30 ft x 1 ft 3.7 m x 9.1 m x 0.3 m	2592 gal 9812 L	164 lbs 74 kg	36 in x 36 in x 16 in 914 mm x 914 mm x 406 mm	1055-02014-105	⚠	5- or 7-ton truck with fuel pods
12 ft x 36 ft x 1 ft 3.7 m x 11.0 m x 0.3 m	3231 gal 12,231 L	190 lbs 86 kg	36 in x 36 in x 16 in 914 mm x 914 mm x 406 mm	1055-02000-105	⚠	2500-gal HEMTT and FRC
14 ft x 54 ft x 1 ft 4.3 m x 16.5 m x 0.3 m	5654 gal 21,403 L	296 lbs 134 kg	42 in x 36 in x 18 in 1067 mm x 914 mm x 457 mm	1055-02001-105	⚠	5000-gal tanker
14 ft x 56 ft x 1 ft 4.3 m x 17.1 m x 0.3 m	5864 gal 22,198 L	305 lbs 138 kg	42 in x 36 in x 18 in 1067 mm x 914 mm x 457 mm	1055-02002-105	⚠	5000-gal tanker

**⚠WARNING:** This product can expose you to chemicals including lead, which is known to cause cancer and birth defects or other reproductive harm. For more information go to [www.P65Warnings.ca.gov](http://www.P65Warnings.ca.gov). (USA)



## Military Environmental Stewardship

With more than 25 years of trusted expertise in spill containment, our industry partners, Basic Concepts (BCI) offers military-approved containment solutions designed for efficient transport and deployment in the field. Flexible Fail-Safe® MilBerm™ Bund features easy portability and fast deployment. It complies with local, state, and federal environmental spill regulations, as well as branch-specific regulations.

Army Regulation 200-1 – Environmental Protection and Enhancement (USA)

“The Army is committed to environmental stewardship in all actions as an integral part of the Army mission.”

Marine regulation MCO P5090.2A – Environmental Compliance and Protection Manual (USA)

“The Marine Corps shall actively protect and enhance the quality of the environment through strict compliance with all applicable regulatory requirements.”

Reference (FM 3-100-4/MCRP 4-11B Environmental Consideration in Military Operations) (USA)

DES and BCI are committed to designing and manufacturing spill prevention products to help implement brand-specific regulations and standard operating procedures. Standard and custom sizes are available to meet Spill Prevention Control and Containment Plan requirements.



Fail-Safe® MilBerm™ Bund safely captures leaks or spills during refueling operations.



Portable Fail-Safe® MilBerm™ Bund is suitable for containing generators.