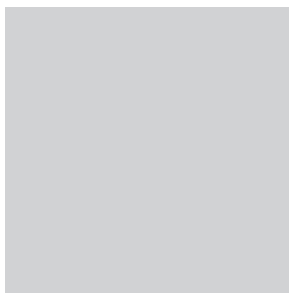


# Environmental Protection Solutions

## Spill Containment & Personnel Safety





*Start with the Essential<sup>SM</sup>*

**Basic Concepts (BCI) is part of Justrite Safety Group**

For more than a century, Justrite has kept workers safe. We're trusted experts dedicated to protecting where the world works, ensuring every customer achieves compliance to regulations, and follows best practices for a safe and productive workplace.

Justrite Safety Group is a growing family of leading industrial safety companies. We are united by deep safety knowledge, long experience, and a commitment to *protecting people, property and the planet.*



**Worker & Workplace Safety**

- Cable Management
- Emergency Showers
- Hazardous Storage
- Industrial Matting
- Motion Safety

**Environmental Protection**

- Aerosol Recycling
- Ground Protection
- Material Handling
- Secondary Containment
- Spill Containment

*Expert*





# A Wide Range of Engineered Secondary Containment Solutions

At BCI, we protect where the world works. We offer a comprehensive range of secondary containment solutions across many applications, tailored to meet your specific requirements and industry needs. The regulations surrounding environmental containment can be complex. We will guide you into compliance—and help keep you there.

## Table of Contents

### Spill Containment

- Flexible Containment Berms ..... 5-8
- Bulk Storage Containment .....9-11
- Light-Duty Containment Berms ...12-15
- Drip / Small Leak Containment .... 16-19
- Oil Spill Containment .....20-21
- Structured Spill Containment .....22-26

### Personnel Safety

- Workspace Barriers .....27
- Noise Barriers ..... 28-29

## How to Order

Contact info below



Don't see what you need?  
 We'll custom build it!  
 See page 31 for details.

# Choices for Different Applications

Flexible geomembrane liners provide protection from exposure to oils, fuels, and chemicals. Choose the BC material that best meets your application—ranging from light-duty, to moderate, to exceptional performance. Consider the attributes below when choosing the product that matches your specific need.

Geomembrane Liner	BC 1	BC 2.8	BC 3	BC 4	BC 5
	MATERIAL	MATERIAL	MATERIAL	MATERIAL	MATERIAL
Abrasion resistance	★	★★	★★★	★★★★	★★★★★
Puncture resistance	★	★★	★★★	★★★★	★★★★★
Tensile/tear strength	★★	★★	★★★	★★★★	★★★★★
Temperature range	★★	★★★★	★★★★	★★★	★★★★★
Chemical resistance - petroleum based	★★	★★★	★★★★	★★★★	★★★★★
Chemical resistance - general acids	★★★	★★★★	★★★★★	★★★★★	★★
UV resistance	★	★★	★★★★	★★★	★★★★★

## Proper secondary spill containment practices offer these benefits:

- Captures dangerous spills
- Protects the environment
- Reduces slip and fall accidents
- Reduces hazardous clean-up costs
- Avoids costly fines
- Complies with regulations



**Flexible Containment Berms · SPILL CONTAINMENT**

# Rigid-Lock QuickBerm®

Versatile, drive-in secondary spill containment for safety, regulatory compliance, and environmental stewardship

- Fast and easy setup in minutes, no assembly needed!
- Single-piece construction—patented Rigid-Lock wall-support system integral to berm provides unobstructed work space.
- Stainless steel brace supports lock the walls at a full 90° for secure, strong structural integrity—no sagging.
- Sidewalls lower quickly for easy drive-in and out.
- Flexible, durable geomembrane liner withstands a broad range of chemicals including petroleum, oils, grease, and most acids.
- Reinforced CriticalCorner™ design features wraparound diagonal radio frequency (RF) welds to prevent seam leaks and extend berm life expectancy.
- Top rim of walls finished with a 1-in (25-mm) hem for added strength.
- Each brace support includes a Rigid-Lock base with integrated hole for optional anchoring.
- Folds down for easy portability, permits immediate spill response.
- Reliable, 100% leakproof protection helps comply with EPA for containment and spill prevention (SPCC).
- Excellent puncture and abrasion resistance—choice of materials to accommodate light- to heavy-duty work requirements.

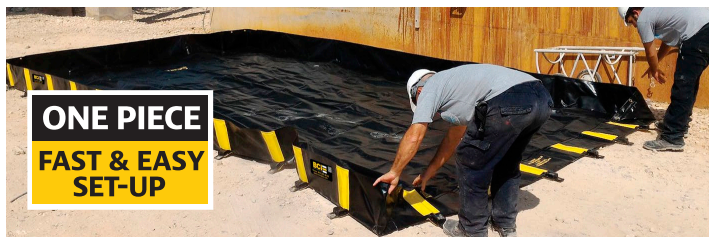


Use Rigid-Lock QuickBerm® to capture potential spills when dispensing from an IBC.

**Ideal for:**

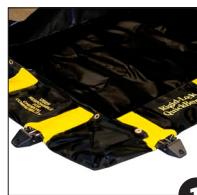
- Vehicles
- Tankers
- Heavy equipment
- 55-gallon drums
- Intermediate bulk containers (IBCs)
- Generators
- Pumps
- Air compressors
- Pillow tanks
- Storage tanks

**No assembly needed—saves time, ready in minutes!**

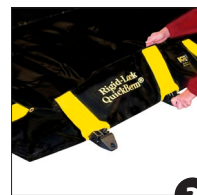


**ONE PIECE  
FAST & EASY  
SET-UP**

Ready in minutes!



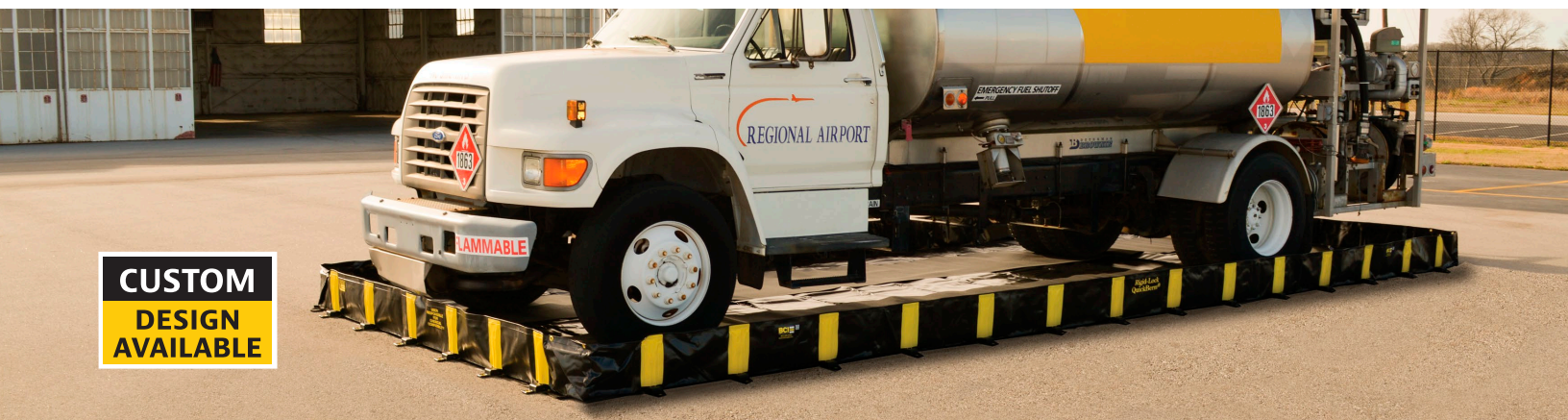
1 Unfold berm, with supports in flat position.



2 A simple tug locks supports in upright position.



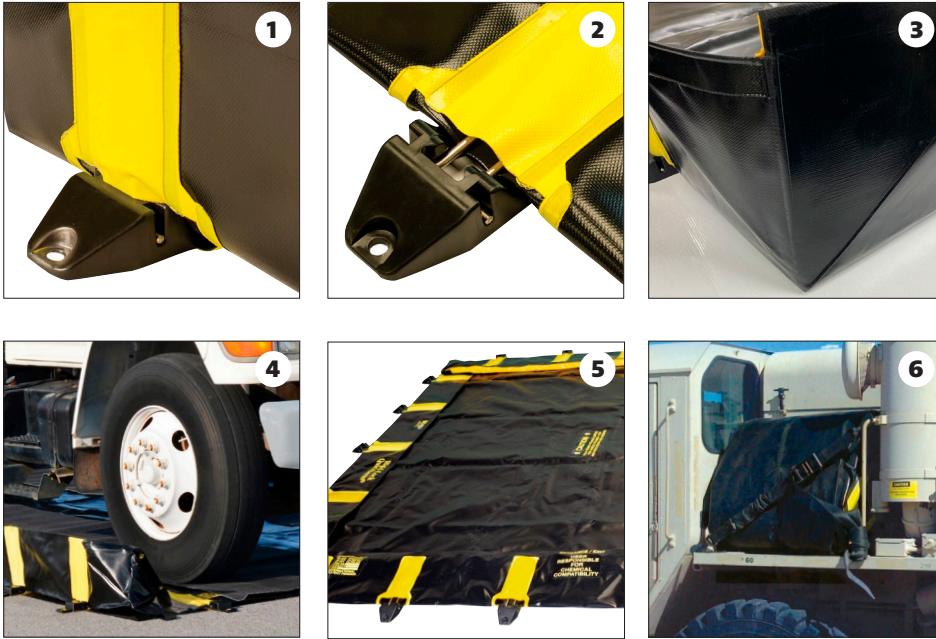
Fully deployed for quick spill readiness!



**CUSTOM  
DESIGN  
AVAILABLE**

**SPILL CONTAINMENT** • Flexible Containment Berms

# Rigid-Lock QuickBerm® offers unmatched performance



1. One-piece, no assembly needed. Unfold into a 90° locked position—brace support withstands wind loads of 40 miles per hour.
2. Stainless steel brace support is encased in a durable Rigid-Lock base that features an integrated hole for optional anchoring.
3. CriticalCorner™ wraparound design prevents seam leaks for fluid-tight reliability.
4. Supports resist extreme temperatures of -50° to 160°F (-45.5° to 71.1°C). Capable of withstanding any wheeled vehicle weight.
5. Drive-through at any angle.
6. Folds down for compact storage in a vehicle or in your facility for quick access.



## Different materials, different applications



Suitable for infrequent drive-in or -out scenarios, pedestrian traffic, and for placing heavy materials within the working space



More durable and thicker, suitable for more frequent drive-in or -out applications



Highest tensile strength, abrasion and puncture resistance for frequent drive-in or -out applications in extreme cold temperatures

Capacity Gallons/ Liters	Dimensions W x L x H		Model No	Ship Wt lb/kg	CA Prop 65	Model No	Ship Wt lb/kg	CA Prop 65	Model No	Ship Wt lb/kg	CA Prop 65
	Interior	Folded									
175/662	4 ft x 6 ft x 12 in 1.2 m x 1.8 m x 305 mm	24 in x 24 in x 5 in 610 mm x 610 mm x 127 mm	1050-01746-026	23/10	⚠	1050-01746-105	25/10	⚠	1050-01746-201	25/11	⚠
355/1344	6 ft x 8 ft x 12 in 1.8 m x 2.4 m x 305 mm	24 in x 24 in x 12 in 610 mm x 610 mm x 305 mm	1050-01931-026	35/16	⚠	1050-01931-105	38/17	⚠	1050-01931-201	39/18	⚠
745/2820	10 ft x 10 ft x 12 in 3.0 m x 3.0 m x 305 mm	28 in x 28 in x 12 in 711 mm x 711 mm x 305 mm	1050-01799-026	56/26	⚠	1050-01799-105	61/28	⚠	1050-01799-201	63/29	⚠
1196/4527	10 ft x 16 ft x 12 in 3.0 m x 4.9 m x 305 mm	120 in x 192 in 3048mm x 4877mm	1050-01762-026	791/359	⚠	1050-01762-105	85/39	⚠	1050-01762-201	90/41	⚠
2510/9501	12 ft x 28 ft x 12 in 3.7 m x 8.5 m x 305 mm	32 in x 32 in x 16 in 813 mm x 813 mm x 406 mm	1050-01835-026	139/63	⚠	1050-01835-105	152/70	⚠	1050-01835-201	160/73	⚠
3410/12908	12 ft x 38 ft x 12 in 3.7 m x 11.6 m x 305 mm	144 in x 456 in 3658 mm x 11582 mm	1050-03958-026	281/128	⚠	1050-03958-105	198/90	⚠	1050-03958-201	206/94	⚠
5236/19820	14 ft x 50 ft x 12 in 4.3 m x 15.2 m x 305 mm	168 in x 600 in 4268 mm x 15240 mm	1050-03547-026	225/102	⚠	1050-03547-105	280/127	⚠	1050-03547-201	295/134	⚠

Note (1): For exterior dimension, add 8-in (203-mm) to width and length to account for support and hub. Note (2): When selecting a berm size, allow 12-in (305-mm) at entry or exit for lowering and raising the wall.

**⚠ WARNING:** This product can expose you to chemicals including lead, which is known to the State of California to cause cancer and birth defects or other reproductive harm, and nickel, which is known to the state of California to cause cancer. For more information go to [www.P65Warnings.ca.gov](http://www.P65Warnings.ca.gov).

## Customize your Rigid-Lock QuickBerm®

- Size: any length, any width.  
Wall heights of 8- or 12-inch  
(203- or 305-mm)
- Shape
- Integrated protection mats

**CUSTOM  
DESIGN  
AVAILABLE**

Rigid-Lock QuickBerm® provides compliant secondary containment with standard sizes offering capacities ranging from 175- to 5,236 gallons (662- to 19,820 liters).

### Need something larger or have a unique requirement for your business?

With our custom design program, our experienced, knowledgeable sales and engineering staff will create a solution to meet your specific need.

*Learn more about our custom program on page 31.*



Custom sizes to fit a space or specific vehicle.



Convenient, integrated protection mats.

**SPILL CONTAINMENT** • Flexible Containment Berms

# Accessories for Rigid-Lock QuickBerm®

## Ground and Track Bund Guards for All Drive-Through Bunds

Improve berm longevity without sacrificing functionality

- Heavy-duty woven fabric improves wear resistance.
- Use ground mats under berms to create a smooth, uniform deployment area.
- Use track mats inside berm for extra protection along tire paths.
- Thick, durable black woven fabric protects floors and walls from abrasion caused by skidding, turning, and braking.
- Available in heavy-duty coated polyester, or economical, lightweight coated vinyl for infrequent use.

**CUSTOM  
DESIGN  
AVAILABLE**

*Custom built for the application—  
contact a sales representative for more information.*



Track and ground mats improve wear resistance and extend the life of your berm.



Custom welded-in track mat.

## HFF Oil Stop Valve Bund Drain Kit

Filters rain water to remove hydrocarbons to a non-detectable level

- Filters all organic hydrocarbons to <5ppm; effluent will be at non-detectable levels. organic compounds—will not drip or leach out.
- Removes sheen, gasoline, diesel, transmission oil, refined oils, and other volatile
- Automatically shuts off in the case of a major hydrocarbon release.
- Low maintenance required when used with a reusable pre-filter to catch debris, silt, dirt, paper, limbs, etc.



Description	Model No
Berm drain with hydrocarbon filter oil stop valve	9001-04436

## Bund Repair Kits

Repair berm on the fly or in the field

- Berm repair kit contains everything needed to re-seal berm in the event of a tear
- Included heat gun ensures tears are sealed seamlessly and without leaks
- Ideal for small to medium tears

Description	Model No	CA Prop 65
Deluxe repair kit for BC1 - BC4 liner materials	1090-00101-RKT	⚠
Deluxe repair kit for BC5 liner material	1090-00101-PKT	⚠

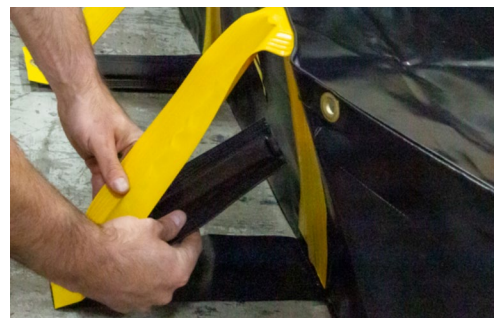
**⚠ WARNING:** This product can expose you to chemicals including toluene, which is known to the State of California to cause cancer and birth defects or other reproductive harm. For more information go to [www.P65Warnings.ca.gov](http://www.P65Warnings.ca.gov).



# Outside Support QuickBerm®

Quick and easy setup for temporary spill containment

- Provides the protection of the QuickBerm, with outside support braces.
- Counterbalanced outside locking supports ensure rigid upright walls, even in windy conditions.
- One-piece design deploys quickly—no assembly, no inflation, no plastic feet to cause premature berm floor wear.
- Reinforced CriticalCorner™ design features wraparound diagonal welds for superior strength and fluid-tight reliability.
- Can be staked into position through grommets at each support position.
- Sides fold down to allow pallet jacks, forklifts, and dollies to be driven into and out of the containment.
- Braces lay flat for drive-in with no breakage from tires.
- Durable fuel and chemical resistant geomembrane liner.
- Folds down into compact size for easy transportation and storage.
- Custom sizes available.



Position wall support upright and lock flap into place.



**CUSTOM  
DESIGN  
AVAILABLE**



Capacity Gallons/Liters	Dimensions W x L x H		Model No	Ship Wt lb/kg	CA Prop 65
	Interior	Folded			
179/677.5	4 ft x 6 ft x 1 in 1.2 m x 1.8 m x 305 mm	28 in x 28 in x 4 in 711 mm x 711 mm x 102 mm	1002-00168-026	23/10.4	⚠
239/906	4 ft x 8 ft x 12 in 1.2 m x 2.4 m x 305 mm	30 in x 30 in x in 762 mm x 762 mm x 152 mm	1002-00117-026	25/11.3	⚠
359/1359	6 ft x 8 ft x 12 in 1.8 m x 2.4 m x 305 mm	30 in x 30 in x 6 in 762 mm x 762 mm x 152 mm	1002-00088-026	31/14.06	⚠
479/1812.3	8 ft x 8 ft x 12 in 2.4 m x 2.4 m x 305 mm	30 in x 30 in x 10 in 762 mm x 762 mm x 254 mm	1002-00977-026	38/17.23	⚠
748/2831.7	10 ft x 10 ft x 12 in 3.0 m x 3.0 m x 305 mm	30 in x 30 in x 11 in 762 mm x 762 mm x 279 mm	1002-00084-026	51/23.13	⚠
1077/4077.6	12 ft x 12 ft x 12 in 3.7 m x 3.7 m x 305 mm	30 in x 30 in x 12 in 762 mm x 762 mm x 305 mm	1002-00102-026	66/29.93	⚠
1436/5436.8	12 ft x 16 ft x 12 in 3.7 m x 4.9 m x 305 mm	30 in x 30 in x 12 in 762 mm x 762 mm x 305 mm	1002-03819-026	82/37.19	⚠
1795/6796	12 ft x 20 ft x 12 in 3.7 m x 6.1 m x 305 mm	36 in x 36 in x 16 in 914 mm x 914 mm x 406 mm	1002-01816-026	98/44.45	⚠
1914/7249.1	16 ft x 16 ft x 12 in 4.9 m x 4.9 m x 305 mm	36 in x 36 in x 16 in 914 mm x 914 mm x 406 mm	1002-00576-026	101/45.81	⚠
2393/9061.4	16 ft x 20 ft x 12 in 4.9 m x 6.1 m x 305 mm	42 in x 42 in x 26 in 1067 mm x 1067 mm x 660 mm	1002-00756-026	120/54.53	⚠
2992/11326.7	20 ft x 20 ft x 12 in 6.1 m x 6.1 m x 305 mm	42 in x 42 in x 26 in 1067 mm x 1067 mm x 660 mm	1002-00242-026	143/64.86	⚠

⚠ **WARNING:** This product can expose you to chemicals including lead, which is known to the State of California to cause cancer and birth defects or other reproductive harm and nickel, which is known to the state of California to cause cancer. For more information go to [www.P65Warnings.ca.gov](http://www.P65Warnings.ca.gov).

**SPILL CONTAINMENT • Bulk Storage Containment**

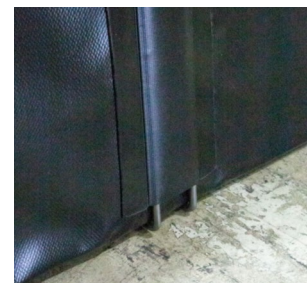
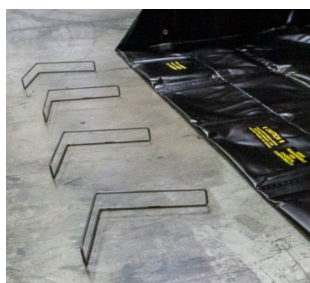
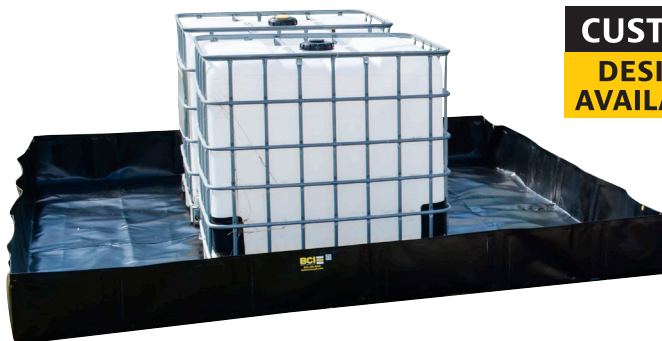
# Angle Bracket QuickBerm®

Economical secondary spill containment—suitable for stationary containment needs

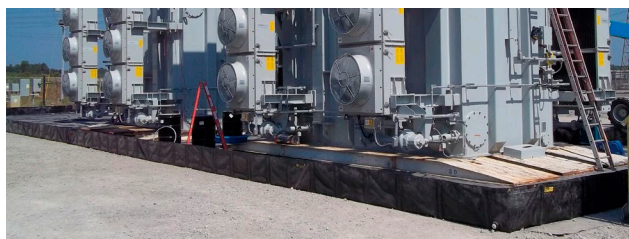
- Best for applications with limited need to vehicles drive in/out, such as storage for transformers, generators, metal/poly tanks, IBCs, oiling/refueling operations, and more.
- Arrives folded for easy shipping—assemble by simply slipping angle brackets into slots.
- Angle L-brackets provide sturdy sidewall support—in steel or aluminum.
- Top 1-inch hem adds strength and prevents wall sag—reinforced corners for 100% containment.
- Fuel and chemical-resistant geomembrane liner.
- Custom sizes available with walls from 18- to 24-inch high.



Affordable spill containment for small- to big-scale applications.



Angle L-brackets slip into protective pockets to keep walls upright, no sagging.



Capacity Gallons/Liters	Dimensions W x L x H		Model No	Ship Wt lb/kg	CA Prop 65
	Interior	Folded			
179/677.5	4 ft x 6 ft x 12 in 1.2 m x 1.8 m x 305 mm	26 in x 26 in x 3 in 660 mm x 660 mm x 76 mm	1003-00704-026	23/10.4	⚠
239/906	4 ft x 8 ft x 12 in 1.2 m x 2.4 m x 305 mm	26 in x 26 in x 3 in 660 mm x 660 mm x 76 mm	1003-02300-026	25/11.3	⚠
359/1359	6 ft x 8 ft x 12 in 1.8 m x 2.4 m x 305 mm	28 in x 28 in x 4 in 711 mm x 711 mm x 102 mm	1003-00705-026	31/14.06	⚠
479/1812.3	8 ft x 8 ft x 12 in 2.4 m x 2.4 m x 305 mm	30 in x 30 in x 4 in 762 mm x 762 mm x 102 mm	1003-03573-026	38/17.23	⚠
748/2831.7	10 ft x 10 ft x 12 in 3.0 m x 3.0 m x 305 mm	30 in x 30 in x 5 in 762 mm x 762 mm x 127 mm	1003-01685-026	51/23.13	⚠
1077/4077.6	12 ft x 12 ft x 12 in 3.7 m x 3.7 m x 305 mm	30 in x 30 in x 6 in 762 mm x 762 mm x 152 mm	1003-04814-026	66/29.93	⚠
1436/5436.8	12 ft x 16 ft x 12 in 3.7 m x 4.9 m x 305 mm	30 in x 30 in x 12 in 762 mm x 762 mm x 305 mm	1003-00213-026	82/37.19	⚠
1795/6796	12 ft x 20 ft x 12 in 3.7 m x 6.1 m x 305 mm	30 in x 30 in x 12 in 762 mm x 762 mm x 305 mm	1003-01838-026	105/47.62	⚠
1914/7249.1	16 ft x 16 ft x 12 in 4.9 m x 4.9 m x 305 mm	30 in x 30 in x 12 in 762 mm x 762 mm x 305 mm	1003-04964-026	108/48.98	⚠
2393/9061.4	16 ft x 20 ft x 12 in 4.9 m x 6.1 m x 305 mm	30 in x 30 in x 16 in 762 mm x 762 mm x 406 mm	1003-01518-026	128/58.05	⚠
2992/11326.7	20 ft x 20 ft x 12 in 6.1 m x 6.1 m x 305 mm	42 in x 42 in x 26 in 1067 mm x 1067 mm x 660 mm	1003-04884-026	152/68.9	⚠

⚠ **WARNING:** This product can expose you to chemicals including lead, which is known to the State of California to cause cancer and birth defects or other reproductive harm and nickel, which is known to the state of California to cause cancer. For more information go to [www.P65Warnings.ca.gov](http://www.P65Warnings.ca.gov).

# High-Wall Bund

Highly flexible spill control berm that contours to uneven terrains—suitable for stationary containment needs

- Best for applications with limited need to drive in/out, such as storage for transformers, generators, metal/poly tanks, IBCs, oiling/refueling operations, and waste materials.
- Independent, 3-feet (0.9 m) tall all aluminum quick-set A-frame supports allow adjustment to grassy, hilly, bumpy surfaces.
- Deploys in field in less than an hour with 5 people, no tools required.
- Rugged geomembrane liner for excellent abrasion, puncture, and chemical resistance.

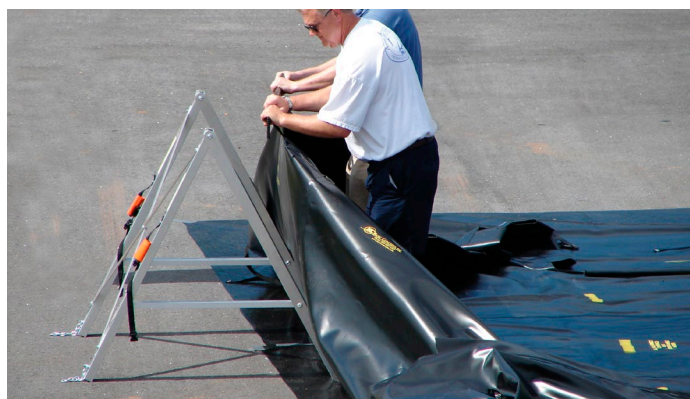
*Custom built for the application—  
contact a sales representative for more information.*



Most Popular



High-wall berm provides secondary containment for horizontally- or vertically-stored metal or poly tanks.



No tools needed to assemble. Securely attach liner portion of the berm to the aluminum A-frame supports which are spaced four feet apart.



Custom-size a high-wall berm to fit your unique application (shown here: 20-ft wide x 32-ft long).



**SPILL CONTAINMENT • Light-Duty Containment Berms**

# Rigid-Lock QuickBerm® Lite

Versatile, on-the-go spill containment!

- Lightweight—folds down to a small size for storage in trucks, emergency vehicles, and spill kits.
- Portable, one-piece design sets up fast and easy.
- Unobstructed 100% leakproof sump captures spills from saddle tanks, hydraulic lines, pipes, batteries, machinery, and drums.
- Tough geomembrane liner provides broad UV and chemical resistance.
- Patented Rigid-Lock walls with stainless steel braces lock at 90° for strong structural integrity.
- Durable engineered nylon hub accepts optional anchors for use in windy conditions.
- Add optional grates for use as a decon station or to lift containers above contaminated liquid.



Use for personnel decontamination.

**CUSTOM  
DESIGN  
AVAILABLE**

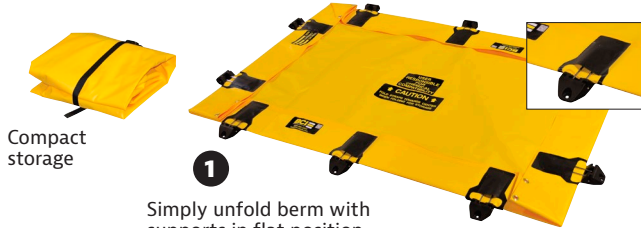
**Many uses:**

- Damaged saddle tanks
- Emergency decon station
- Leaky containers
- Hydraulic leaks and breaks
- Battery or transformer storage
- Refueling overfills



Capture spills from leaky equipment.

**Ready in 2 quick steps!**



Compact storage

**1** Simply unfold berm with supports in flat position.



**2** A simple tug locks wall in upright position.



One piece, no assembly needed or parts to lose. Fully operational in just minutes!



Capacity Gallons/Liters	Dimensions W x L x H		Model No	Ship Wt lb/kg	CA Prop 65
	Interior	Folded			
79/299	4 ft x 4 ft x 8 in 1.2 m x 1.2 m x 203 mm	16 in x 12 in x 5 in 406 mm x 305 mm x 127 mm	1054-03654-106	13/5	⚠
119/451	4 ft x 6 ft x 8 in 1.2 m x 1.8 m x 203 mm	16 in x 14 in x 6 in 406 mm x 356 mm x 152 mm	1054-03655-106	16/6	⚠
159/602	4 ft x 8 ft x 8 in 1.2 m x 2.4 m x 203 mm	16 in x 14 in x 6 in 406 mm x 356 mm x 152 mm	1054-03656-106	20/9	⚠
318/1204	8 ft x 8 ft x 8 in 2.4 m x 2.4 m x 203 mm	16 in x 14 in x 12 in 406 mm x 356 mm x 305 mm	1054-03657-106	29/13	⚠
398/1507	8 ft x 10 ft x 8 in 2.4 m x 3.0 m x 203 mm	16 in x 14 in x 14 in 406 mm x 356 mm x 356 mm	1054-03658-106	33/15	⚠

Note (1): For exterior dimension, add 8-in (203-mm) to width and length to account for support and hub. Note (2): When selecting a berm size, allow 8-in (203-mm) at entry or exit for lowering and raising the wall.

**⚠ WARNING:** This product can expose you to chemicals including diisononyl phthalate and lead, which are known to the State of California to cause cancer and birth defects or other reproductive harm. For more information go to [www.P65Warnings.ca.gov](http://www.P65Warnings.ca.gov).

# Rigid-Lock Decon

Deploys in seconds—one berm handles multiple decontamination zones simultaneously

- Durable geomembrane liner with patented interior walls form multiple zones for different solutions.
- 2, 3, or 4 washdown zones—one ¾-in GHT (garden hose thread) drain fitting per zone.
- Use optional grating to keep personnel above the fluid.

Multiple interior walls, each with inside brace support system, enable you to accommodate up to four separate solutions at the same time.



Capacity Gallons/Liters	Zones	Dimensions W x L x H		Model No	Ship Wt lb/kg	CA Prop 65
		Interior	Folded			
299/1132	2	6 ft x 10 ft x 8 in 1.8 m x 3.0 m x 203 mm	24 in x 24 in x 4 in 610 mm x 610 mm x 102 mm	1059-03805-106	20/9	⚠
478/1810	3	6 ft x 16 ft x 8 in 1.8 m x 4.9 m x 203 mm	26 in x 26 in x 5 in 660 mm x 660 mm x 127 mm	1059-03806-106	34/15	⚠
598/2264	4	6 ft x 20 ft x 8 in 1.8 m x 6.1 m x 203 mm	28 in x 28 in x 4 in 711 mm x 711 mm x 102 mm	1059-03807-106	46/21	⚠

⚠ **WARNING:** This product can expose you to chemicals including diisononyl phthalate and lead, which are known to the State of California to cause cancer and birth defects or other reproductive harm. For more information go to [www.P65Warnings.ca.gov](http://www.P65Warnings.ca.gov).

# Decontamination Shower Berm Kit

Portable decon station helps prevent environmental contamination

- Quick and easy setup of berm, tent and shower.
- Collapsible tent enclosure keeps spray contained while contaminants drip down into the berm.
- Includes 2-stage decontamination berm with drain port at each zone for easy disposal of liquid waste.
- Included 110V pump aids draining of waste from active section of berm.
- Decon grating in each section of berm keeps users elevated above harmful liquids.



Included shower connects to standard garden hose and delivers more than 2.5 GPM of flow from two nozzles.

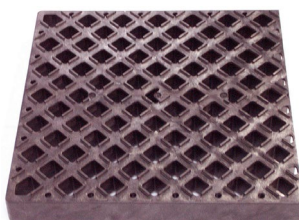
Capacity Gallons/Liters	Zones	Dimensions W x L x H		CA Prop 65	Shower Berm Kit		Shower only	
		Berm	Tent		Model No	Ship Wt lb/kg	Model No	Ship Wt lb/kg
299/1132	2	6 ft x 10 ft x 8 in 1.8 m x 3.0 m x 203 mm	5 ft x 5 ft 1.5 m x 1.5 m	⚠	8022-04756-KIT	20/9	8025-04751-SHOWER	13/6

⚠ **WARNING:** This product can expose you to chemicals including diisononyl phthalate and lead, which are known to the State of California to cause cancer and birth defects or other reproductive harm. For more information go to [www.P65Warnings.ca.gov](http://www.P65Warnings.ca.gov).

# Decon Grating

Keep personnel and parts away from fluids and contaminants

- Durable, anti-slip grates for use with Rigid-Lock QuickBerm® Lite or Rigid-Lock Decon QuickBerm®.
- Chemical resistant, easy-to-clean polyethylene.



Description	Dimensions W x L x H	Model No	Ship Wt lb/kg
Polyethylene Grating	2 ft x 2 ft x 2 in 0.6 m x 0.6 m x 51 mm	2091-02085	12/5
Polyethylene Grating	2 ft x 4 ft x 2 in 0.6 m x 1.2 m x 51 mm	2091-02086	25/11

**SPILL CONTAINMENT • Light-Duty Containment Berms**

# Make-A-Berm™ Custom Spill Containment

Keep leaks contained—custom berms to fit the application, shape, or environment

Make-A-Berm spill containment is made to fit your application, indoors or out. It's easily installed with no need to move existing equipment—install around difficult-to-move equipment, in spill-prone areas, or areas where a standard shape berm won't fit. Make-A-Berm components are modular, versatile and customizable to fit your layout. For a liquid-proof seal, install with the recommended adhesive/sealant.

Make-A-Berm walls are flexible and crush-resistant, with foam inserts that return to their original shape with no memory loss after foot traffic or hand truck equipment. Wall exteriors are made from non-absorbent, modified PVC-coated fabric that resists oils, gasoline, acids and other liquids. Heavy-Duty Make-A-Berm uses a heavier PVC-coated fabric along with aluminum mounting strips to increase wear resistance—ideal for utility vehicle and forklift traffic.

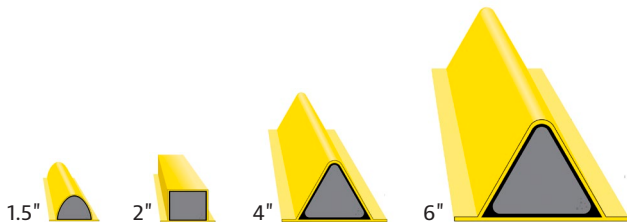
- Durable, semi-permanent containment for spills and leaks around equipment and machinery.
- Made to fit—50-ft kit includes necessary pieces to create a common containment solution.
- Versatile system lets you choose the pieces you need to create a custom shape or size—mix standard and heavy-duty pieces for a fully customized solution.
- Bright, high-visibility colors increase safety in traffic areas.
- Heavy-duty berm withstands heavy vehicle traffic—flexible foam inserts bounce back to shape.
- Helps to comply with EPA for containment and spill prevention (SPCC) regulations.



Make-A-Berm contains oils, gasolines, acids and other liquids.



Heavy-Duty Make-A-Berm is ideal for vehicle and forklift traffic.



Available in four sizes: 1.5- and 2-in berms are ideal for small to medium capacity containment, 4- and 6-in sizes for larger containment needs.

## Simple, Easy Installation



Use adhesive/sealant to install berm sections to the floor, creating a liquid-proof barrier.



Vinyl cement connects sections together—use to link two sections, attach corners and drain plug.

## Light-Duty Containment Berms • SPILL CONTAINMENT

### Create a Custom Make-A-Berm™ Containment Solution

Connect multiple berm pieces to fit your containment area, no matter the shape or size. Standard and heavy-duty components are interchangeable for a fully customizable, durable solution. For best results, use on a dry, smooth surface with the recommended adhesive.

#### Standard Make-A-Berm; yellow

Model	Description	Quantity	Berm Height	CA Prop 65
<b>Spill Containment Kit, 50 ft</b>				
4001-00134-106-KIT	Includes 2 straight sections (25 ft), 4 corners, 6 tubes adhesive/sealant, vinyl cement (8 oz), 1 roll vinyl collar		1.5 in	▲ <sup>+</sup>
4002-00017-KIT			2 in	▲ <sup>+</sup>
<b>Components</b>				
4001-00134-106REC	Straight Section	1 x 15 ft L	1.5 in	▲
4002-00017-015BOX			2 in	▲
4004-00043-106-KIT		2 x 5 ft L	4 in	▲
4005-00127-106-SET			6 in	▲
4001-00137-106-SET	Corner Set	2	1.5 in	▲
4002-00067-106-SET			2 in	▲
4004-00095-106-SET			4 in	▲
4005-00128-106-SET			6 in	▲
4002-00520-106-SET	Vented Corner	2	2 in	▲
4001-01806-106-SET	Vertical Corner		1.5 in	▲
4002-00762-106-SET			2 in	▲
4004-02037-106-SET			4 in	▲
4005-02038-106-SET			6 in	▲

▲ **WARNING:** This product can expose you to chemicals including diisononyl phthalate, which is known to the State of California to cause cancer and birth defects or other reproductive harm. For more information go to [www.P65Warnings.ca.gov](http://www.P65Warnings.ca.gov).

▲ **WARNING:** This product can expose you to chemicals including silica, crystalline and titanium dioxide, which are known to the State of California to cause cancer, methanol and toluene, which are known by the state of California to cause birth defects or other reproductive harm, and diisononyl phthalate, which is known to the State of California to cause cancer and birth defects or other reproductive harm. For more information go to [www.P65Warning.ca.gov](http://www.P65Warning.ca.gov).

#### Heavy-Duty Make-A-Berm; orange

Model	Description	Berm Height	Quantity	CA Prop 65
4001-01804-113-KIT	Heavy-Duty Straight Section	1.5 in	1 x 12.5 ft L	▲ <sup>+</sup>
4003-00050-113-KIT		2 in		▲ <sup>+</sup>
4001-01807-113-KIT	Heavy-Duty Vented Corner	1.5 in	2	▲ <sup>+</sup>
4002-01341-113-KIT		2 in		▲ <sup>+</sup>
4001-01806-113-KIT	Heavy-Duty Vertical Corner	1.5 in		▲ <sup>+</sup>
4002-01342-113-KIT		2 in		▲ <sup>+</sup>

▲ **WARNING:** This product can expose you to chemicals including diisononyl phthalate and lead, which are known to the State of California to cause cancer and birth defects or other reproductive harm and nickel, which is known to the state of California to cause cancer. For more information go to [www.P65Warnings.ca.gov](http://www.P65Warnings.ca.gov).

#### Accessories

Model	Description	CA Prop 65
4002-01264-106-DRN	Drain Plug, 2 in H x 10 in L	▲
9001-00324-CLKBX	Sili-Thane 803 Adhesive and Sealant; 10.3 oz tube, 6 tubes/box	▲*
9001-00170-866BOX	HH-66 Vinyl Cement, 8 oz	▲**

▲ **WARNING:** This product can expose you to chemicals including silica, crystalline and titanium dioxide, which are known to the State of California to cause cancer, and methanol, which is known to the State of California to cause birth defects or other reproductive harm. For more information go to [www.P65Warnings.ca.gov](http://www.P65Warnings.ca.gov).

\*▲ **WARNING:** This product can expose you to chemicals including toluene, which is known to the State of California to cause birth defects or other reproductive harm. For more information go to [www.P65Warnings.ca.gov](http://www.P65Warnings.ca.gov).



Convenient kits include everything needed for a common spill containment solution.



Straight Sections can be linked together or combined with corners for a liquid-proof containment solution. Easily cut to size with a utility knife.



Corners join two sections at an angle. Connect to either standard or heavy-duty straight sections.



Vented Corners release air when berm is compressed to prevent damage—ideal for wheeled traffic.



Vertical Corners attach flush to a wall or other vertical barrier, for fully-sealed containment on walls or vertical machine areas.



Drain Plug lets you easily drain innocuous fluids, such as rain or snowmelt. Add to any part of the berm, avoiding vehicle or hand truck traffic areas to prevent damage.



Sili-Thane® 803 Adhesive and Sealant creates a leakproof installation to dry and clean floors.



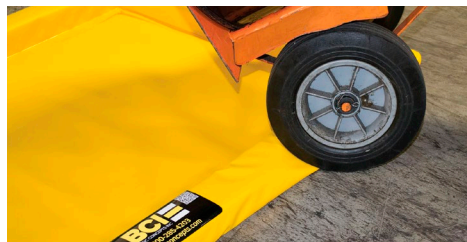
Vinyl Cement bonds multiple pieces together for a liquid tight seal.

**SPILL CONTAINMENT • Drip/Small Leak Containment**

# Spill Pads and Spill Pads HD

Roll-over sidewalls for easy leak containment or washdowns

- Encased urethane foam soft sidewalls for use with drum dolly—springs back into place with no memory loss.
- No assembly required—simply unfold for instant use in shop or field.
- Standard models constructed with lightweight, durable geomembrane liner that resists the harshest of liquids, including petroleum, oils, greases, and most acids.
- Heavy-duty (HD) models feature heavy-duty vinyl designed for increased vehicle traffic, ideal for maintenance applications.
- Available in 2- or 4-inch high walls to contains minor leaks and spills.
- Corner grommets allow anchoring in place.
- Optional grates keep containers above spills (see page 13).



Roll-over sidewalls offer easy drum placement—foam walls quickly spring back for secure containment.



HD models capture spills from small vehicles and heavy equipment with convenient drive-in access.



Heavy-duty vinyl stands up to increased traffic from forklifts and small vehicles.



Capacity Gallons/Liters	Interior W x L	Dimensions		Sidewall Height	Spill Pad			Spill Pad HD		
		Folded W x L x H	Model No		Ship Wt lb/kg	CA Prop 65	Model No	Ship Wt lb/kg	CA Prop 65	
5/19	2 ft x 2 ft 0.6 m x 0.6 m	30 in x 30 in x 2 in 762 mm x 762 mm x 51 mm	2002-00096-106REC	8/4	⚠	2002-00096-101REC	9/4	⚠		
10/38		30 in x 30 in x 4 in 762 mm x 762 mm x 102 mm	2004-02606-106	10/5	⚠	2004-02606-101		⚠		
10/38	2 ft x 4 ft 0.6 m x 1.2 m	30 in x 54 in x 2 in 762 mm x 1372 mm x 51 mm	2002-00148-106REC	10/5	⚠	2002-00148-101REC	11/5	⚠		
20/76		16 in x 30 in x 16 in 406 mm x 762 mm x 406 mm	2004-01275-106	12/5	⚠	2004-01275-101		13/6	⚠	
40/151	2 ft x 8 ft 0.6 m x 2.4 m	28 in x 28 in x 16 in 711 mm x 711 mm x 406 mm	2004-02605-106	18/8	⚠	2004-02605-101	19/8	⚠		
20/76		30 in x 30 in x 6 in 762 mm x 762 mm x 152 mm	2002-00940-106REC	14/6	⚠	2002-00940-101REC	15/6	⚠		
40/151	4 ft x 4 ft 1.2 m x 1.2 m	20 in x 24 in x 16 in 508 mm x 610 mm x 406 mm	2004-01037-106	19/9	⚠	2004-01037-101	20/10	⚠		
60/227		24 in x 24 in x 16 in 610 mm x 610 mm x 406 mm	2004-01262-106	26/12	⚠	2004-01262-101	28/13	⚠		
40/151	4 ft x 8 ft 1.2 m x 2.4 m	30 in x 30 in x 12 in 762 mm x 762 mm x 305 mm	2002-00721-106REC	28/13	⚠	2002-00721-101REC	30/14	⚠		
80/303		36 in x 36 in x 16 in 914 mm x 914 mm x 406 mm	2004-01503-106	32/15	⚠	2004-01503-101	33/15	⚠		
44/167	6 ft x 6 ft 1.8 m x 1.8 m	24 in x 24 in x 16 in 610 mm x 610 mm x 406 mm	2002-01966-106REC	31/14	⚠	2002-01966-101REC		⚠		
90/341		38 in x 38 in x 16 in 965 mm x 965 mm x 406 mm	2004-01272-106	84/38	⚠	2004-01272-101	86/39	⚠		
135/511	10 ft x 11 ft 3.0 m x 3.4 m	28 in x 28 in x 16 in 711 mm x 711 mm x 406 mm	2003-00070-106REC	50/23	⚠	2003-00070-101REC	53/24	⚠		
220/833		30 in x 30 in x 16 in 762 mm x 762 mm x 406 mm	2003-00048-106REC	65/30		2003-00048-101REC	67/30			

Note: For exterior dimension on 4-in (102-mm) models, add 12-in (305-mm) to width and length. For exterior dimension on 2-in (51-mm) models, add 6-in (152-mm) to width and length.

**⚠ WARNING:** This product can expose you to chemicals including diisononyl phthalate and lead, which are known to the State of California to cause cancer and birth defects or other reproductive harm. For more information go to [www.P65Warnings.ca.gov](http://www.P65Warnings.ca.gov).

**Drip/Small Leak Containment • SPILL CONTAINMENT**

# Drip Bunds

Capture small oil leaks and drips before they contaminate the ground or create unsafe work surfaces

- Lightweight, flexible and portable—use to catch drips from leaky vehicles, industrial machinery, hydraulic lines, pipes, and drums.
- Replaceable, oil-only sorbent within a welded, leakproof barrier—reusable outer shell with refill packs available.
- Patented, coated mesh outer layer traps coarse debris.
- Chemical-resistant, durable geomembrane liner—rated for drive-over applications.
- Brass grommets in opposing corners accept anchor stakes (not included)
- Two sizes; extended model with weighted bottom holds berm in place in winds up to 50 mph.

Regular Drip Berm  
21-in x 23-in.



Extended Drip Berm 24-in x 36-in.

Description	Capacity Gallons/Liters	Dimensions		Model No	Ship Wt lb/kg	CA Prop 65
		Product W x L	Folded W x L x H			
Drip Pad with 5-Pack Sorbents	1.25/5	21 in x 23 in 533 mm x 584 mm	—	3001-00124-368	4/2	⚠
Extended Drip Pad with 5-Pack Sorbents	1.75/7	24 in x 36 in 610 mm x 914 mm	24 in x 12 in x 6 in 610 mm x 305 mm x 152 mm	3003-00074-368	8/4	⚠
Drip Pad 5-Pack Refill	1.25/5	15 in x 19 in 381 mm x 483 mm	—	3001-00124-PAD	2/1	⚠
Extended Drip Pad 5-Pack Refill	1.75/7	30 in x 52 in 762 mm x 1321 mm	—	3003-00074-PMAT	4/2	⚠

**⚠ WARNING:** This product can expose you to chemicals including lead, which is known to the State of California to cause cancer and birth defects or other reproductive harm. For more information go to [www.P65Warnings.ca.gov](http://www.P65Warnings.ca.gov).

# Pop-Up Pools

Economical, portable spill containment deployments instantly

- Use to catch leaks and spills from punctured saddle tanks, leaking drums, blown hydraulic lines.
- Lightweight, on-the-go spill control folds easy for storage in vehicles, on shelves, near shipping docks.
- Embedded foam ring top raises wall as fluid level increases.
- Durable geomembrane liner for reliable seam adhesions and chemical and abrasion resistance.



Bright safety yellow color for quick visibility. Sizes up to 150 gallon capacity.



Capacity Gallons/Liters	Product Diameter x H	Dimensions	Folded W x L x H	Model No	Ship Wt lb/kg	CA Prop 65
20/76	31 in x 11.75 in 787 mm x 298 mm	18 in x 12 in x 3 in 457 mm x 305 mm x 76 mm	7001-02695-10622	2/1	⚠	
66/250	46 in x 14 in 1168 mm x 355 mm	18 in x 16 in x 6 in 457 mm x 406 mm x 152 mm	7001-02696-10622	6/3	⚠	
100/379	50 in x 18.75 in 1270 mm x 476 mm	24 in x 24 in x 3 in 610 mm x 610 mm x 76 mm	7001-02697-10622	11/5	⚠	
150/568	62 in x 16 in 1574 mm x 406 mm	24 in x 24 in x 5 in 610 mm x 610 mm x 127 mm	7001-02698-10622	14/6	⚠	

**⚠ WARNING:** This product can expose you to chemicals including diisononyl phthalate, which is known to the State of California to cause cancer and birth defects or other reproductive harm and nickel, which is known to the state of California to cause cancer. For more information go to [www.P65Warnings.ca.gov](http://www.P65Warnings.ca.gov).

**SPILL CONTAINMENT • Drip/Small Leak Containment**

# Ceiling Leak Diverters

Economical way to respond quickly to roof leaks and protect your equipment and inventory from water damage

- Economical way to respond quickly to roof leaks and protect your equipment and inventory from water damage.
- Avoid downtime after a roof leak and keep floors dry and safe from slip accidents.
- Durable, puncture resistant and watertight geomembrane liner for long life.
- Accepts a standard garden hose to channel overhead pipe and ceiling leaks to container or floor drain—flow rate of 3.3 gal/min (12.5 L/min).
- Constructed with cinched corners for quick and easy installation.
- Available with high strength magnets for steel rafter attachment, or grommets for bungee or zip tie attachment.



Product W x L	Dimensions		Model No Grommets	Model No Magnets	Ship Wt lb/kg	CA Prop 65
	Interior	Folded W x L x H				
5 ft x 5 ft 1.5 m x 1.5 m	18 in x 12 in x 2 in 457 mm x 305 mm x 51 mm		8010-01394-106	8010-01394-106MAG	7/3	⚠
7 ft x 7 ft 2.1 m x 2.1 m	18 in x 16 in x 4 in 457 mm x 406 mm x 102 mm		8010-01395-106	8010-01395-106MAG	10/5	⚠
10 ft x 10 ft 3.0 m x 3.0 m	18 in x 16 in x 6 in 457 mm x 406 mm x 152 mm		8010-01396-106	8010-01396-106MAG	15/7	⚠
12 ft x 12 ft 3.7 m x 3.7 m		8010-01397-106	8010-01397-106MAG	23/10	⚠	
15 ft x 15 ft 4.6 m x 4.6 m	18 in x 16 in x 10 in 457 mm x 406 mm x 254 mm		8010-01398-106	—	35/16	⚠

**⚠ WARNING:** This product can expose you to chemicals including diisononyl phthalate, which is known to the State of California to cause cancer and birth defects or other reproductive harm and nickel, which is known to the state of California to cause cancer. For more information go to [www.P65Warnings.ca.gov](http://www.P65Warnings.ca.gov).

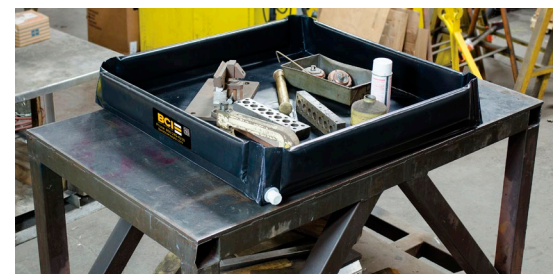


Hose channels rainwater leaks into floor drain or collection container.

# Mini-Berm Flex Tray

Safe, reliable spill containment for tabletop parts cleaning and fluid transfer operations

- Robust geomembrane liner withstands petroleum products and acids.
- Sturdy foam walls and rigid corner supports for strength.
- One-inch NPT drain fitting for convenient emptying.
- Compact, easy to fold and store—utility strap included.



Capacity Gallons/Liters	Dimensions W x L x H		Model No	Ship Wt lb/kg	CA Prop 65
	Interior	Folded			
30/114	3 ft x 3 ft x 6 in 0.9 m x 0.9 m x 152 mm	5 in x 50 in x 7 in 127 mm x 1270 mm x 178 mm	2005-01919-026	5/2	⚠
55/208	4 ft x 4 ft x 6 in 1.2 m x 1.2 m x 152 mm	5 in x 62 in x 7 in 127 mm x 1575 mm x 178 mm	2005-01918-026	7/3	⚠
70/265	4 ft x 5 ft x 6 in 1.2 m x 1.5 m x 152 mm	8 in x 60 in x 8 in 203 mm x 1524 mm x 203 mm	2005-02610-026	12/5	⚠
110/416	5 ft x 6 ft x 6 in 1.5 m x 1.8 m x 152 mm	8 in x 62 in x 8 in 203 mm x 1575 mm x 203 mm	2005-01920-026	18/8	⚠

**⚠ WARNING:** This product can expose you to chemicals including diisononyl phthalate, which is known to the State of California to cause cancer and birth defects or other reproductive harm and nickel, which is known to the state of California to cause cancer. For more information go to [www.P65Warnings.ca.gov](http://www.P65Warnings.ca.gov).



Drip/Small Leak Containment • SPILL CONTAINMENT

# Water-Filled Drain Covers

Ensure compliance to storm water regulations and prevent run-off pollutants from entering drains

- Seal drains before washdowns, maintenance, or other clean up tasks to prevent contaminants from going into water systems.
- Easy-fill push plug accepts standard water hose—do not fill over 5-in (127-mm) high.
- Long lasting, durable geomembrane liner resists damage from UV rays.



**HELPS YOU COMPLY**  
**EPA & SPCC**

Dimensions		Model No	Ship Wt lb/kg	CA Prop 65
Product W x L	Folded W x L x H			
30 in x 30 in 762 mm x 762 mm	15 in x 15 in x 3 in 381 mm x 381 mm x 76 mm	8005-00525-107	5/2	⚠
42 in x 42 in 1067 mm x 1067 mm	16 in x 18 in x 4 in 406 mm x 457 mm x 102 mm	8005-00526-107	10/5	⚠
42 in x 66 in 1067 mm x 1676 mm	16 in x 18 in x 6 in 406 mm x 457 mm x 152 mm	8005-00527-107	13/6	⚠
58 in x 58 in 1473 mm x 1473 mm	29 in x 29 in x 5 in 737 mm x 737 mm x 127 mm	8005-00528-107	16/7	⚠



**⚠ WARNING:** This product can expose you to chemicals including diisononyl phthalate, which is known to the State of California to cause cancer and birth defects or other reproductive harm and nickel, which is known to the state of California to cause cancer. For more information go to [www.P65Warnings.ca.gov](http://www.P65Warnings.ca.gov).

# Waterproof Tarps

Protect drums and equipment to avoid contamination or damage

- Use under berms for extra puncture- and wear-resistance.
- Waterproof geomembrane liner vinyl coated fabric provides protection from direct sunlight, sand, dust, and rain.
- Brass grommets in corners offer a convenient way to secure the tarp in place.

**CUSTOM  
DESIGN  
AVAILABLE**



Dimensions		Model No	Ship Wt lb/kg	CA Prop 65
Product W x L	Folded W x L x H			
5 ft x 5 ft 1.5 m x 1.5 m	18 in x 16 in x 6 in 457 mm x 406 mm x 152 mm	5003-02607-108	6/3	⚠
5 ft x 10 ft 1.5 m x 3.0 m		5003-02608-108	8/4	⚠
10 ft x 10 ft 3.0 m x 3.0 m		5003-02284-108	15/7	⚠
10 ft x 12 ft 3.0 m x 3.7 m		5003-00407-108	20/9	⚠
10 ft x 20 ft 3.0 m x 6.1 m	18 in x 16 in x 14 in 457 mm x 406 mm x 356 mm	5003-00543-108	30/14	⚠



**⚠ WARNING:** This product can expose you to chemicals including diisononyl phthalate, which is known to the State of California to cause cancer and birth defects or other reproductive harm and nickel, which is known to the state of California to cause cancer. For more information go to [www.P65Warnings.ca.gov](http://www.P65Warnings.ca.gov).

**SPILL CONTAINMENT • Oil Spill Containment**

# Oil Solidifying Polymers

Turns liquid hydrocarbons into a solid mass on contact

- Proprietary blend of USDA food-grade polymers that are non-toxic, non-corrosive, non-carcinogenic, and non-hazardous.
- Forms a molecular bond to solidify hydrocarbons into an inert, solid, rubber-like mass, while also suppressing harmful vapors.
- Works on a full spectrum of hydrocarbons ranging from low-end gasoline to heavy crude oil.
- Once solidified, hydrocarbons cannot leach out—dispose of solid in most landfills as non-hazardous waste.
- Byproduct is recyclable and can be used as raw material for asphalt, rubber and plastic production, or can be burned as fuel.
- Tested as non-harmful to aquatic plant and animal life and waterfowl.
- BCI Solidifying Polymer is listed on the EPA National Contingency Plan Product Schedule as a “Solidifier” for use on oil spills in the navigable waters of the United States.



Description	Model No
10 lb loose granules in a 6.5 gallon pail	CIA010
50 lb loose granules in a 30 gallon drum	CIA050
100 lb loose granules in a 55 gallon drum	CIA100
200 lb loose granules in a 95 gallon drum	CIA200

# Rapid Spill Response Kits

Portable, quick-response kits for oil spills

- Includes BCI Hydrocarbon Solidifying Polymers in convenient, portable kits.
- Designed for quick, effective response to oil spills on land and water.
- Portable bag is small enough to tuck behind seats of vehicle or in storage areas.
- Once solidified, polymer, booms and pillows can be disposed of in landfills as non-hazardous waste.



CIA200



ER-HM95

Description	What's included	Model No
Portable spill response bag	10 lb bulk polymer in 2 x 5 lb bags (1) Quick Deployment Boom, 2" x 12 ft (1) Hydrocarbon Solidifying Pillow, 12" x 12" (4) Pads, 15" x 19" (1) Disposal bag and (1 pair) Chemical resistant gloves	CIA200
Portable bucket system	10 lb bulk polymer in 6.5 gallon pail (1) Quick Deployment Boom, 2" x 12 ft (1) Hydrocarbon Solidifying Pillow, 12" x 12" (1) Disposal bag (1) Scoop (1) Respirator mask (1 pair) Chemical resistant gloves	ER-HMS
30 gallon overpack system	25 lb bulk polymer in 30 gallon DOT-approved overpack (1) Quick Deployment Boom, 2" x 25 ft (4) Hydrocarbon Solidifying Pillow, 12" x 12" (2) Disposal bag (1) Scoop (1) Respirator mask (2 pair) Chemical resistant gloves	ER-HM30
55 gallon overpack system	50 lb bulk polymer in 55 gallon DOT-approved overpack (1) Quick Deployment Boom, 2" x 50 ft (6) Hydrocarbon Solidifying Pillow, 12" x 12" (3) Disposal bag (1) Scoop (1) Respirator mask (2 pair) Chemical resistant gloves	ER-HM55
95 gallon overpack system	100 lb bulk polymer in 95 gallon DOT-approved overpack (2) Quick Deployment Boom, 2" x 50 ft (12) Hydrocarbon Solidifying Pillow with loop, 12" x 12" (4) Disposal bag (2) Scoop (2) Respirator mask (2 pair) Chemical resistant gloves	ER-HM95

# Hydrocarbon Solidifying Booms and Bilge Bags

## Spill containment devices for hydrocarbon spills in water or on land

- Proprietary blend of hydrocarbon solidifying polymers bonds with hydrocarbons.
- Polymer granules solidify on contact—hydrocarbons will not leach out.
- Reusable until the polymer has fully solidified—simply rinse dirt and debris from the surface and redeploy as needed.
- After solidifying, the boom can be disposed of in most landfills as non-hazardous waste.



### Sheen Booms

- Collect sheen and hydrocarbons from the surface of water where there are issues with currents and/or wind.
- Constructed from a high tensile screen that allows hydrocarbons to enter the boom.



### Quick Deployment Booms

- Lightweight and flexible spill containment device for hydrocarbon spills on both land and water.
- Ideal for spills in calm waters such as marinas, harbors, retention ponds and underground storage tanks.
- Excellent tool to protect storm drains from fuel spills when used on land.



### Marine Booms

- Designed to be used in any area where oily water is present, such as in oil-water separators, retention or containment structures, and utility vaults or manholes.
- Appropriate for marine spills in water with or without currents.
- Can be used to prevent hydrocarbons from entering storm drains on land.



### Bilge/Marine Pillows

- Ideal for removing sheen and oil from bilges of recreational or commercial vessels.
- Proprietary formula used in the pillows is slower acting but allows for visual inspection of bilge for removal of spent pillow as polymers increase in size.
- Also ideal for use in oil-water separators, retention or containment structures and utility vaults or manholes.



Description	Size	Model No
Sheen Boom	3 in dia x 25 ft long	SB3X25WC
	3 in dia x 25 ft long with rope	SB3X25WCR
Quick Deployment Boom	2 in dia x 12 ft long	QDB012
	2 in dia x 25 ft long	QDB25
	2 in dia x 50 ft long	QDB50

Description	Size	Model No
Marine Boom	3 in dia x 20 in long with loop	MB320
	3 in dia x 5 ft long with loop	MB103
	3 in dia x 10 ft long with loop	MB100-05
Bilge/Marine Pillow	6" x 6" with 1 oz oil solidifying polymer. Pack of 50.	MP6-01
	12" x 12" with 8 oz oil solidifying polymer. Pack of 20.	MP12-01

# Hydrocarbon Detection Strips

## Simple and proven oil detection

Quickly and accurately determine the presence of hydrocarbons in water. Simply dip into a liquid sample and the light blue strip will turn dark blue if hydrocarbons are detected; the color intensity and size of the darker area are indicators of the quantity of hydrocarbons in the sample. If the sample contains no hydrocarbons, the strip will not moisten or discolor.

- Ideal for detecting contaminated water in elevator shafts, underground utility vaults and manholes, retention and secondary containment vessels, and out-fall on oil-water separators prior to pumping out the water.
- Strip measures 2.75" x 0.75" and comes in a hard plastic container.

Description	Model No
Hydrocarbon detection strips, 2.75" x 0.75". Pack of 100.	HDS100



The Hydrocarbon Detection Strip turns a darker blue when hydrocarbons are present.

**SPILL CONTAINMENT • Structured Spill Containment**

# Accumulation Centers and Ramp

Combine units to create your own customized spill-control system

Low-profile centers only measure 5½-in (140-mm) high for easy handling of drums. Made with 100% recycled polyethylene, these accumulation centers are nearly impervious to chemicals, including acids and corrosives. Seamless construction eliminates leaks, making them ideal for drum filling and dispensing operations. Self-locating grates won't ride up, and are removable for easy cleaning. Combine 2-, 4-, 6-, and 8-drum modular units to create your own customized system. Use the optional joining clips to firmly lock units together. Sumps remain separate and clips can be removed for easy repositioning. The 6- and 8-drum center models are EPA compliant, support SPCC, and meet NFPA 1 2009 edition and IFC fire codes.

Use optional Sump-to-Sump™ drain kit (includes joining clips and transfer tube) for applications requiring a continuous sump. Kit allows you to join centers together, on-site, for full compliance with regulations when sump capacities reach 71-gal (270-L). Kit includes one pair stainless steel joining clips, one pair rubber grommets, one polytetrafluoroethylene (PTFE) transfer tube. (Patent No US 6,622,879,B1)

**Companion Ramp**

Load and unload heavy drums with ease. Anti-skid ribs provide maximum safety. Place the ramp anywhere on accumulation centers size 2-drum or larger.



**HELPS YOU COMPLY**  
**EPA & SPCC**

Description	Sump Capacity	Load-bearing Capacity	External Dimensions W x D x H	Compliance	Model No	Ship Wt lb/kg
1-drum center	12 gal 45 L	1250 lbs 567 kg	25 in x 25 in x 5.5 in 635 mm x 635 mm x 140 mm	—	9008-03001-802	17/8
2-drum center	24 gal 90 L	2500 lbs 1134 kg	49 in x 25 in x 5.5 in 1245 mm x 635 mm x 140 mm		9008-03002-802	32/15
4-drum center	49 gal 185 L	5000 lbs 2268 kg	49 in x 49 in x 5.5 in 1245 mm x 1245 mm x 140 mm		9008-03003-802	61/28
6-drum center	73 gal 276 L	7500 lbs 3402 kg	73 in x 49 in x 5.5 in 1854 mm x 1245 mm x 140 mm	EPA, SPCC, OSHA	9008-03004-802	91/41
8-drum center	98 gal 371 L	10,000 lbs 4536 kg	97 in x 49 in x 5.5 in 2464 mm x 1245 mm x 140 mm		9008-03005-802	122/55
Ramp for above		1000 lbs 455 kg	48 in x 33 in x 6.25 in 1219 mm x 838 mm x 159 mm		9012-03123-802	41/19
Joining clips, one pair, stainless steel	—	—	4 in x 2 in 102 mm x 51 mm	—	9008-03216	1/0.5
Sump-to-Sump™ drain kit			—		9008-03217	

# Spill Control Pallets

Keep workers safe from accidental slips indoors and avoid costly hazmat cleanup costs

- Protect against ground contamination.
- Comply with EPA and avoid potential fines.

Made of molded 100% recycled polyethylene, these pallets resist chemical attack from hazardous acids, caustics and solvents. The oversized sump holds the contents of up to a 55-gal (200-L) drum in the event of leak or rupture – meeting or exceeding the most stringent spill containment regulations. Seamless construction eliminates leaks. Self-locating grates lift off for quick cleanup. Black color hides grime and dirt to keep your workplace looking clean. Choose from square or in-line configurations. EPA compliant, supports SPCC, and meets NFPA 1 2009 edition and IFC fire codes.

**HELPS YOU COMPLY**  
**EPA & SPCC**



Description	Sump Capacity	Load-bearing Capacity	External Dimensions W x D x H	Compliance	Model No	Ship Wt lb/kg	
2-drum in-line pallet w/drain	66 gal 250 L	2500 lbs 1134 kg	49 in x 25 in x 18 in 1245 mm x 635 mm x 457 mm	EPA, SPCC, OSHA	9007-03115-802	44/20	
2-drum in-line pallet					9007-03116-802		
3-drum in-line pallet w/drain	75 gal 284 L	3750 lbs 1701 kg	73 in x 25 in x 11.625 in 1854 mm x 635 mm x 295 mm		9007-03117-802	58/26	
3-drum in-line pallet					9007-03118-802		
4-drum square pallet w/drain	73 gal 276 L	5000 lbs 2268 kg	49 in x 49 in x 10.25 in 1245 mm x 1245 mm x 260 mm		9007-03119-802	70/32	
4-drum in-line pallet	75 gal 284 L		97 in x 25 in x 9 in 2464 mm x 635 mm x 229 mm		9007-03120-802	77/35	
4-drum square pallet	73 gal 276 L		49 in x 49 in x 10.25 in 1245 mm x 1245 mm x 260 mm		9007-03121-802	70/32	
4-drum in-line pallet w/drain	75 gal 284 L		97 in x 25 in x 9 in 2464 mm x 635 mm x 229 mm		9007-03112-802	77/35	
Ramp for 4-drum square pallet	—		1000 lbs 454 kg		49 in x 33 in x 10.5 in 1245 mm x 838 mm x 267 mm	—	9012-03124-802

**Replacement Grates (100% recycled)**

2-drum grate for all sizes above	—	—	24 in x 48 in x 2.5 in 610 mm x 1219 mm x 63 mm	—	9007-03107-802	16/7
1-drum grate for 3-drum in-line					9007-03106-802	8/4

**SPILL CONTAINMENT • Structured Spill Containment**

# IBC Pallet and Shed

Reliable spill protection and safe storage for IBCs

- Compliant storage for popular 275- or 330-gal (1000- or 1250-liter) IBCs.
- Compact footprint with ergonomic working height.

Constructed of durable 40% recycled polyethylene, these intermediate bulk container pallets offer excellent chemical resistance. They accept IBCs up to 48-in W x 48-in D x 53-in H (1219-mm W x 1219-mm D x 1346-mm H). Large leakproof sump exceeds regulations and protects against high-volume spills.

Sturdy pillar supports accept up to 9,000-lb (4082-kg) uniformly distributed load.

Removable pillars make for easy sump cleanup. Pallet features forklift pockets for relocation when empty. Ships fully assembled.

EPA compliant, supports SPCC, and meets OSHA.



**HELPS YOU COMPLY**  
**EPA & SPCC**

Description	Recycled Content	Sump Capacity	Load-bearing Capacity	External Dim. W x D x H	Compliance	Model No	Ship Wt lb/kg
IBC indoor pallet	40%	372 gal 1408 L	9000 lbs 4082 kg	55 in x 55 in x 37.5 in 1397 mm x 1397 mm x 952 mm	EPA, SPCC, OSHA	9007-03122-802	357/162
IBC outdoor shed w/pallet				60.75 in x 68.5 in x 103.75 in 1543 mm x 1740 mm x 2635 mm		9010-03109-801	621/282

## Structured Spill Containment • SPILL CONTAINMENT

## DrumSheds™

### Safe, secure, and compliant outdoor storage for drums

Weather-resistant DrumSheds™ are made of eco-friendly, 50% recycled polyethylene. Convenient roll-top doors allow access from front or rear. A wide, 52-in (1321-mm) door opening accepts palletized loads. Fully compliant, leakproof pallet sump has removable, durable deck grating for easy cleanup of spills. A spacious interior offers ample headroom for adding funnels or pumps. Safety features include grounding capability, integral anchor bolt locations for wind resistance, and molded lugs to accept padlocks for security. Forklift pockets at the front and back make it easy to relocate empty sheds. Ships fully assembled. Pallets (without shed) also available.

**Low Line Pallets** (without shed) also available. Two-drum and 4-drum sizes feature ergonomic, low 9-in (229-mm) working height.

EPA compliant, supports SPCC, and meets OSHA.



**HELPS YOU  
COMPLY  
EPA & SPCC**

Description	Recycled Content	Sump Capacity	Load-bearing Capacity	External Dimensions W x D x H	Compliance	Model No	Ship Wt lb/kg
2-drum DrumShed™	50%	67 gal 254 L	2500 lbs 1134 kg	60.75 in x 58.5 in x 75.25 in 1543 mm x 1486 mm x 1911 mm	EPA, SPCC, OSHA	9010-03097-801	292/133
4-drum DrumShed™		79 gal 301 L	5000 lbs 2268 kg	60.75 in x 68.5 in x 75.25 in 1543 mm x 1740 mm x 1911 mm		9010-03098-801	343/156
Ramp - Black	100% - Black	—	1000 lbs 455 kg	48 in x 59.75 in x 11.25 in 1219 mm x 1518 mm x 286 mm	—	9012-03125-802	65/30
Ramp - Yellow	0% - Yellow					9012-03126-801	
Low Line Pallet - 2 drum	100%	67 gal 254 L	2500 lbs 1134 kg	55 in x 45 in x 9 in 1397 mm x 1143 mm x 229 mm	EPA, SPCC, OSHA	9007-03113-802	68/31
Low Line Pallet - 4 drum		79 gal 301 L	5000 lbs 2268 kg	55 in x 55 in x 9 in 1397 mm x 1397 mm x 229 mm		9007-03114-802	89/40

**SPILL CONTAINMENT • Structured Spill Containment**

# Spill Trays

Lightweight and low-profile design for small-scale spill control

Made of 100% recycled polyethylene, these eco-friendly spill trays will not rust or corrode. Raised rib bottom adds rigidity and keeps contents out of spills—perfect for pouring and filling applications. Rated for service temperatures between -30° to 120°F (-34 to 49°C).



Spill trays help keep incidental spills and leaks safely contained until you can properly deal with the waste. In areas that work with larger amounts of hazardous substances, spill trays are a valuable secondary or tertiary component of overall spill containment measures.



9015-03144-802



9015-03142-802



9015-03145-802



9015-03141-802



9015-03143-802

Sump Capacity	External Dimensions W x D x H	Compliance	Model No	Ship Wt lb/kg
12 gal 45 L	46 in x 16 in x 5.5 in 1168 mm x 406 mm x 139 mm	—	9015-03143-802	5/2
20 gal 75 L	38 in x 26 in x 5.5 in 965 mm x 660 mm x 139 mm		9015-03141-802	
	47.50 in x 23 in x 5.5 in 1206 mm x 603 mm x 139 mm		9015-03145-802	6/3
23 gal 87 L	37.75 in x 34 in x 5.5 in 959 mm x 867 mm x 139 mm		9015-03142-802	
29 gal 109 L	47 in x 33 in x 5.5 in 1194 mm x 838 mm x 139 mm		9015-03144-802	8/4

# Personal Workspace Cough and Sneeze Guards

Help maintain social distancing and physical separation at workstations

When social distancing cannot be maintained but operations need to continue, Cough and Sneeze Guards provide needed protection in office environments, manufacturing facilities, hotels, restaurants, retail businesses, public buildings and more.

- Personal barriers offer protection from sprays, splashes and direct respiratory droplets to limit exposure to contaminants
- Designed to maintain workplace efficiency—easily move as needed to provide a barrier at counters, desks and work areas
- Eliminate the need to change or spread out workstations—clear PVC lets you interact with others while still physically separating
- Extruded aluminum frame with flexible PVC panel is durable yet lightweight
- Clean with soap and water or disinfectant solution (ammonia-based cleaning products not recommended)
- Easy to assemble with included zip ties (user supplied mallet required)
- Made in the USA
- Custom sizes available

**CUSTOM  
DESIGN  
AVAILABLE**



8019-04745-KIT



8019-04746-KIT



8019-04746-DSK



Tabletop dividers are ideal for breakrooms and common areas.



Clear barriers let you interact with others while physically separating..



8019-04768-RNDTBL



8019-04775-RECTBL

Description	Dimensions	Model	Shpg wt	CA Prop 65
Freestanding Barrier	5 ft W x 6 ft H	8019-04745-KIT	11 lb	⚠
Counter/Desktop Barrier	4 ft W x 3 ft H	8019-04746-KIT	11 lb	⚠
Counter/Desktop Barrier with document pass thru area	3 ft W x 3 ft H	8019-04746-DSK	4 lb	⚠
Round tabletop divider, 4 sections	4 ft dia x 4 ft H	8019-04768-RNDTBL	7 lb	⚠
Rectangular table divider, 3 sections	7 ft W x 2 ft H	8019-04775-RECTBL	14 lb	⚠

**⚠ WARNING:** This product can expose you to chemicals including diisononyl phthalate and aluminum, which are known to the State of California to cause cancer and birth defects or other reproductive harm. For more information go to [www.P65Warnings.ca.gov](http://www.P65Warnings.ca.gov).

# QuietSite™ Noise Reduction Barriers

## Stop noise at the source

QuietSite barriers combat noise by absorbing and reflecting the sound, reducing the perceived noise level (dBA). Our noise reduction barriers are modular, versatile and easy to install. Each basic panel is fitted with brass eyelets with grommets, while premium panels include hook and loop fasteners and magnets for a seamless, secure link between panels.

- Unique acoustic core absorbs noise and vinyl outer layer reflects noise
- Foldable design for easy transportation and storage
- Quickly and easily assembled by one person
- Fire-resistant: Meets NFPA 701 Method 1
- UV protected, water resistant and durable to stand up to harsh weather
- Mount on standard link fence, scaffolding, or steel frame
- Basic panel include grommets for simple installation
- Premium panels feature hook and loop fasteners and magnets—eliminates gaps when overlapping panels
- Ideal for both indoor and outdoor use



**Decibel Levels and Workplace Safety**

The decibel value, or dBA, is an expression of the relative loudness of sound as perceived by the human ear. Normal conversation is approximately 60dBA; a food blender is approximately 90dBA. Each increase of 10dBA doubles perceived sound, so 80dBA may seem twice as loud as 70dBA, and four times as loud as 60dBA.

Noise in the workplace (occupational noise) poses a safety risk to work crews, but also affects the public near job sites. Excessive noise not only damages hearing, but it also creates a distracting work environment that may lead to other safety issues. Businesses and individuals must comply with federal, state and local ordinances to control noise, and non-compliance can result in costly fines or lost time due to project shut-downs.

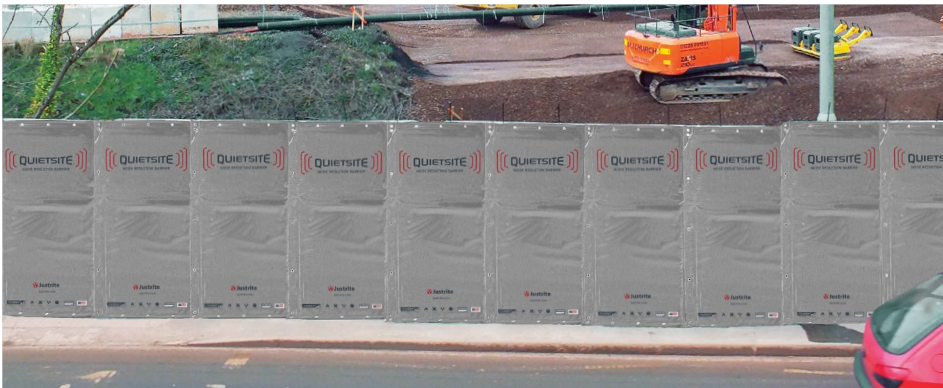
Noise barriers are a proven, effective method of combating noise. QuietSite™ Noise Barriers reduce common construction noises by up to half, changing the perceived sound of a 90 lb jackhammer breaking concrete to using a household blender.



Noise reduction barriers supported by fencing. Use to surround generators, cooling and heating systems, or other noise-generating equipment.



Modular noise-reducing panels feature brass eyelets and grommets on tops and sides for easy attachment to fencing.



The NYC Noise Code mandates every construction site have a noise mitigation plan on location. It recognizes portable barriers with sound insulation for mitigation measures. Shown here, Justrite barriers create a sound-minimizing enclosure between a job site and a pedestrian walkway.



Use for indoor renovation projects.



Kits include premium panel, metal frame and metal base.

**Noise Barrier Panels**

Description	Dimensions W x H	Model	CA Prop 65
QuietSite basic panel, with brass eyelet grommets	4 ft x 6 ft	26460	⚠
	4 ft x 8 ft	26464	⚠
QuietSite premium panel, with hook and loop fasteners and magnets	4 ft x 6 ft	26462	⚠
	4 ft x 8 ft	26466	⚠
QuietSite barrier kit; includes premium panel, metal frame and one metal base	4 ft x 6 ft	26462KT	⚠
	4 ft x 8 ft	26466KT	⚠

**⚠ WARNING:** This product can expose you to chemicals including diisononyl phthalate and aluminum, which are known to the State of California to cause cancer and birth defects or other reproductive harm. For more information go to [www.P65Warnings.ca.gov](http://www.P65Warnings.ca.gov).

**Accessories and Replacement Parts**

Description	Qty/pk	Model	CA Prop 65
Metal barrier frame kit, 4 ft x 8 ft. Includes 2 each stacking pins and spring locks.	1	26468	⚠
Metal base (foot), 4 ft.	1	26470	⚠
Stacking pins with collar, 6". Two required for assembling metal frame.	6	26472	⚠
Spring lock. Two required for assembling metal frame.	6	26476	⚠
Rail clamps. Use to link two frames together.	6	26474	⚠

**⚠ WARNING:** This product can expose you to chemicals including 1,3,5-tirs, which is known to the State of California to cause cancer, 1,3,5-triazine, is known to the State of California to cause birth defects, and 2,4,6(1H,3H,5H) trione which in the state of California is known to cause reproductive harm. For more information go to [www.P65Warnings.ca.gov](http://www.P65Warnings.ca.gov).

**Noise Barrier Applications:**

- Construction sites
- Manufacturing
- Industrial plants
- Public works
- Generators
- Air conditioners
- Civil engineering sites
- Night works
- Oil and gas
- Mining
- Demolition
- Any loud equipment outdoors

# High-strength spray coatings for spill containment

High-strength, flexible coatings withstand temperature fluctuations and surface movement while resisting harsh environments

Our spray-applied structural coating systems are some of the strongest in the industry. Backed by over 30 years of experience, our projects provide environmental protection and meet regulatory requirements for our customers throughout the United States, including the U.S. military, USDA, airports, and petroleum industry and power companies.

BCI SC-3900 offers high strength and flexibility suitable for cracked concrete, degraded steel containment systems and other difficult coating applications. BCI CR-3000 is also high strength with good flexibility, but offers higher corrosion resistance.



Spray-on technology coats smoothly to repair cracks and leaks—tack-free in seconds

BCI combines its market leading, patented spray technology with versatile containment options and water filtration systems. Our proven expertise in secondary containment and coatings allows us to offer an expansive portfolio of products and services from a single-source, ensuring the best possible solution tailored to your application, while complying with applicable environmental regulations.



JFK airport jet fuel tank farm concrete containment coating



UV and corrosion resistant high-strength coating for tanks



Leak and crack repair



Pipeline repair

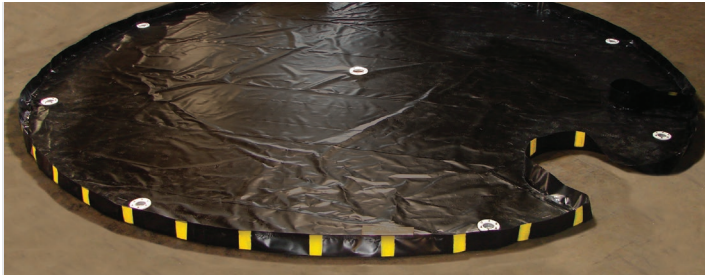
Let our expertise become your peace of mind.





# Spill containment customized for your specific application

Let our experienced, knowledgeable sales and engineering staff create a solution based on your application requirements. See how we've helped others:



**Background:** A silo with multiple pipes running along the inside wall needed cleaning. There were a number of catwalks with grated decking inside the silo which held equipment and workers that needed protection against any wash water from above.

**Solution:** Basic Concepts designed a round-shaped berm with a cutout to accommodate the piping. Deployed on the upper level, the customized berm captured the overspray and wash water, thereby protecting personnel and equipment from the power washing work above.



**Background:** A customer required a berm that would stand up to repeated usage with a wide variety of equipment. They specified extra puncture and abrasion resistance to increase the longevity of the berm. Rather than ordering track mats as a separate accessory for the berm, they wanted "unfold and go" convenience for quick use.

**Solution:** Basic Concepts built a berm with welded-in track mats, resulting in increased abrasion resistance, quicker set-up, and no worries about keeping track of separate loose pieces.



**Background:** An oddly-shaped, six-sided storage room required spill containment for 55-gallon drums. The customer wanted to maximize storage capacity by utilizing the full footprint of the room.

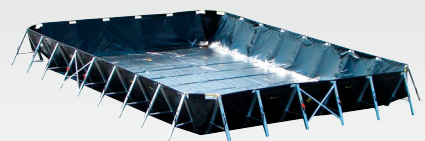
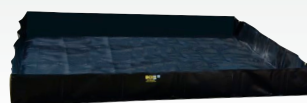
**Solution:** Basic Concepts designed a customized berm to line the entire drum room for proper secondary containment of the drums.



**Background:** A stationary transformer mounted on a concrete pad required overflow spill protection.

**Solution:** Basic Concepts provided leakproof secondary containment by engineering a berm with a square cutout which included a fluid-tight zipper to wrap around the concrete pad.

**Custom Containment!**  
*Nearly any berm · Almost any size or shape*





# Put Our Expertise to Work for You

At BCI, we are dedicated to protecting people, property and the planet. Our experts will help you select solutions that work for your organization and guide you into compliance with EPA and SPCC.